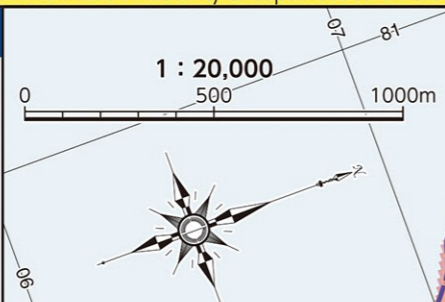
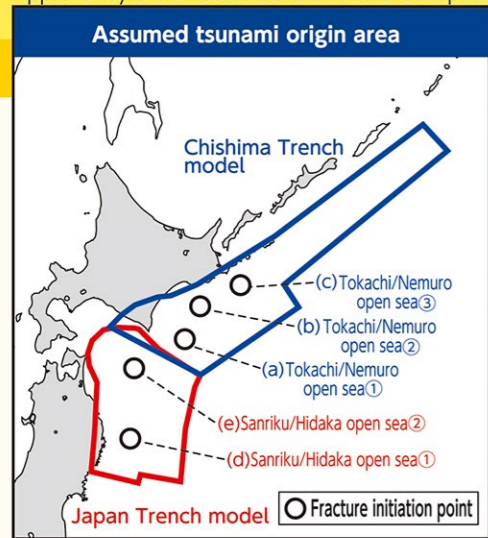
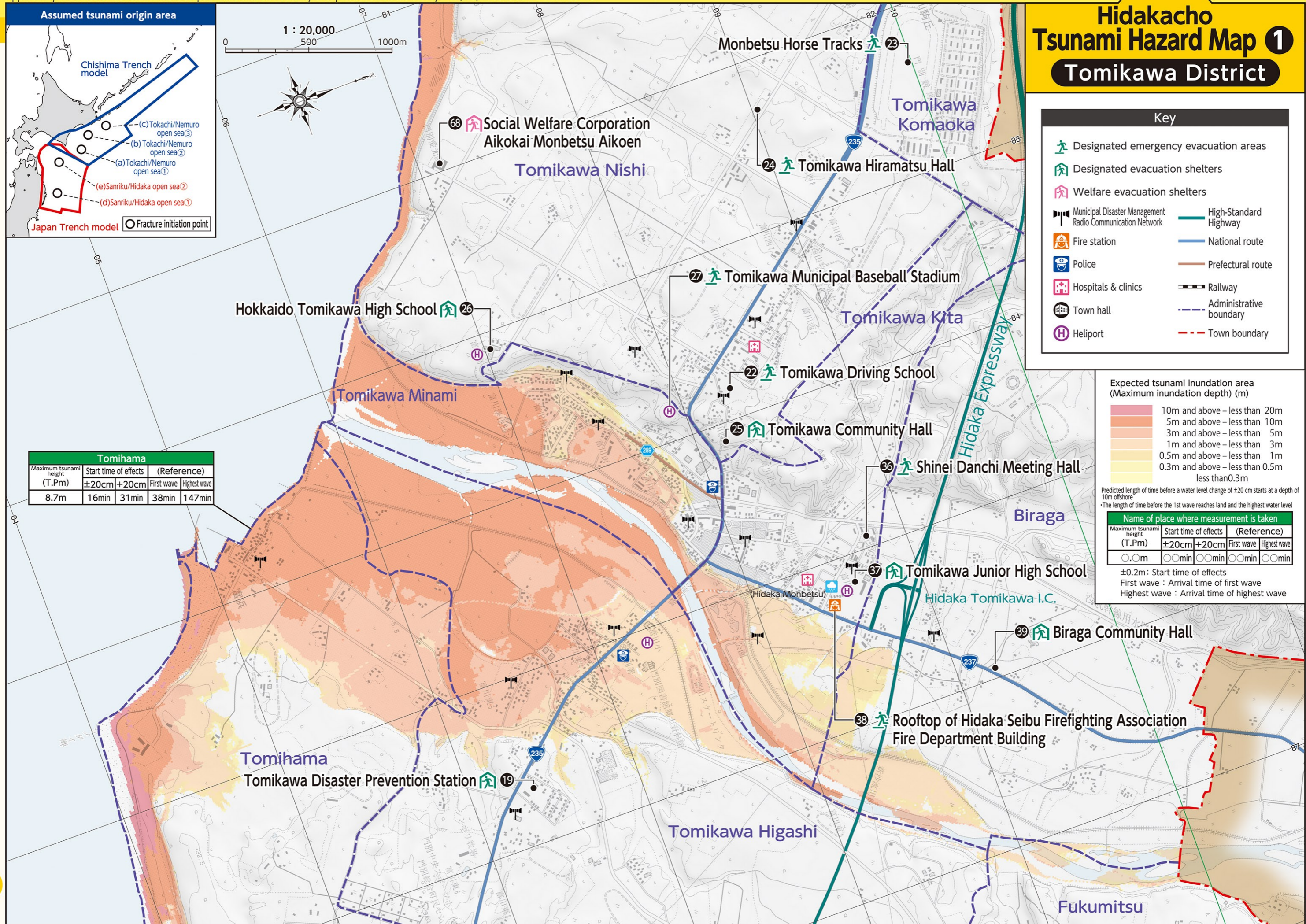


# Hidakacho Tsunami Hazard Map 1 Tomikawa District



### Key

- Designated emergency evacuation areas
- Designated evacuation shelters
- Welfare evacuation shelters
- Municipal Disaster Management Radio Communication Network
- Fire station
- Police
- Hospitals & clinics
- Town hall
- Heliport
- High-Standard Highway
- National route
- Prefectural route
- Railway
- Administrative boundary
- Town boundary

### Expected tsunami inundation area (Maximum inundation depth) (m)

- 10m and above - less than 20m
- 5m and above - less than 10m
- 3m and above - less than 5m
- 1m and above - less than 3m
- 0.5m and above - less than 1m
- 0.3m and above - less than 0.5m
- less than 0.3m

Predicted length of time before a water level change of ±20 cm starts at a depth of 10m offshore  
 \*The length of time before the 1st wave reaches land and the highest water level

Name of place where measurement is taken					
Maximum tsunami height (T.Pm)	±20cm	+20cm	First wave	Highest wave	(Reference)
○.○m	○○min	○○min	○○min	○○min	○○min

±0.2m: Start time of effects  
 First wave: Arrival time of first wave  
 Highest wave: Arrival time of highest wave

Tomihama					
Maximum tsunami height (T.Pm)	±20cm	+20cm	First wave	Highest wave	(Reference)
8.7m	16min	31min	38min	147min	

Bird's-eye view  
 Earthquakes / tsunamis  
 Storms and floods / sediment disasters  
 Evacuation behaviour during a disaster  
 Receiving disaster information  
 Other disasters  
 Everyday preparations  
 Emergency Survival Kits  
 Individual disaster prevention activities  
 First Aid  
 Evacuation shelters by district  
 Flood Maps  
 Tsunami Maps

Bird's-eye view  
 Earthquakes / tsunamis  
 Storms and floods / sediment disasters  
 Evacuation behaviour during a disaster  
 Receiving disaster information  
 Other disasters  
 Everyday preparations  
 Emergency Survival Kits  
 Individual disaster prevention activities  
 First Aid  
 Evacuation shelters by district  
 Flood Maps  
 Tsunami Maps