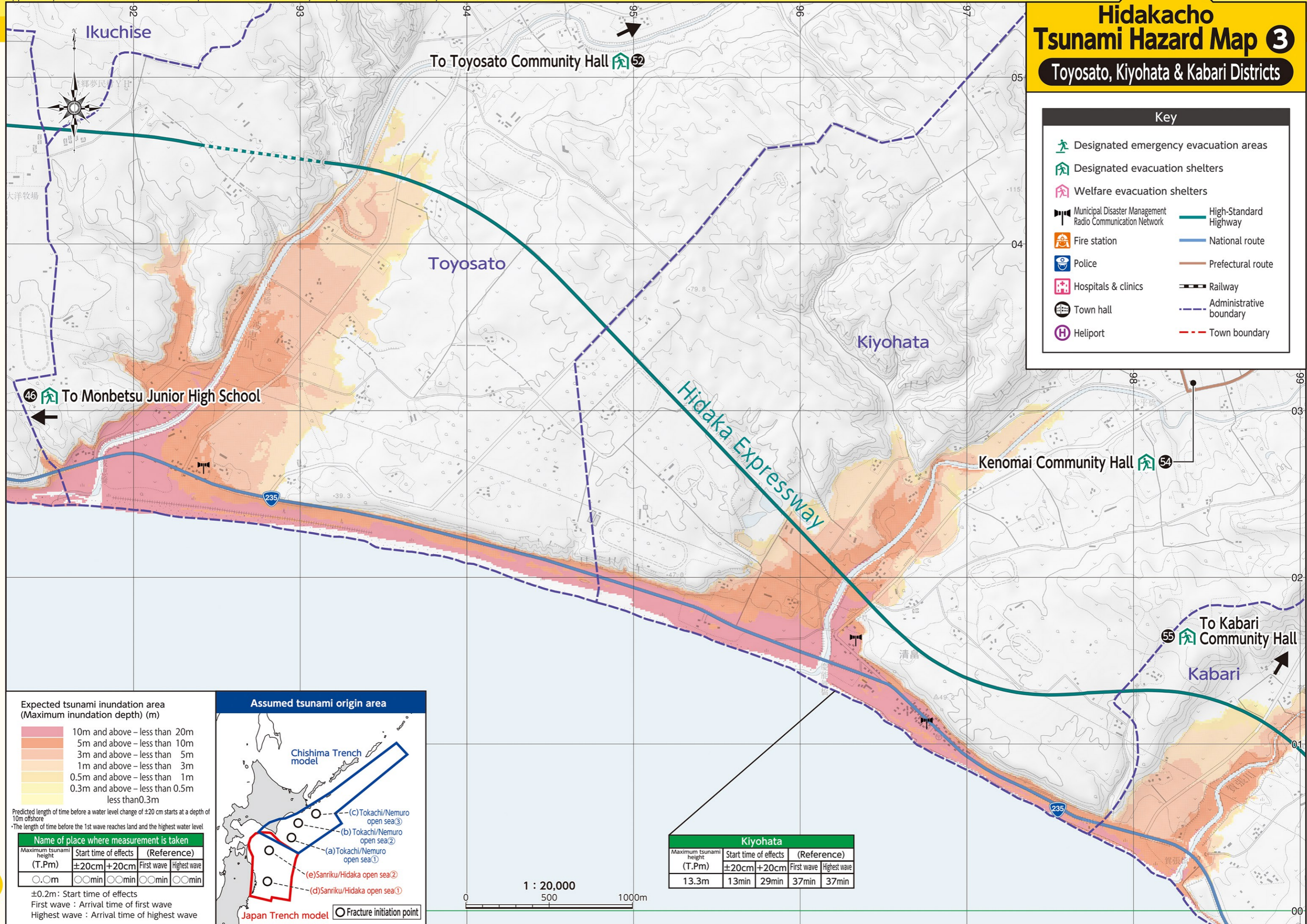


Hidakacho Tsunami Hazard Map ③

Toyosato, Kiyohata & Kabari Districts



Key

- Designated emergency evacuation areas
- Designated evacuation shelters
- Welfare evacuation shelters
- Municipal Disaster Management Radio Communication Network
- Fire station
- Police
- Hospitals & clinics
- Town hall
- Heliport
- High-Standard Highway
- National route
- Prefectural route
- Railway
- Administrative boundary
- Town boundary

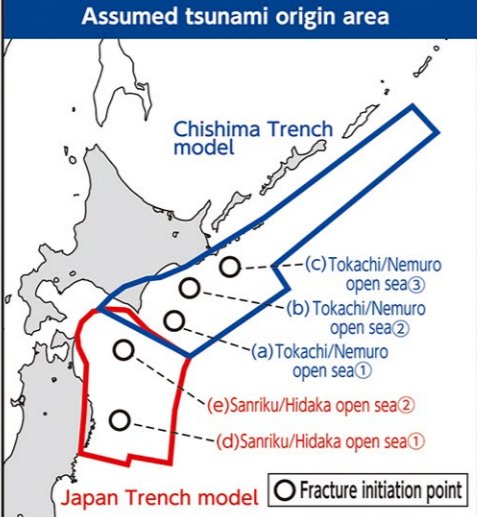
Expected tsunami inundation area (Maximum inundation depth) (m)

10m and above - less than 20m
5m and above - less than 10m
3m and above - less than 5m
1m and above - less than 3m
0.5m and above - less than 1m
0.3m and above - less than 0.5m
less than 0.3m

Predicted length of time before a water level change of ±20 cm starts at a depth of 10m offshore
 *The length of time before the 1st wave reaches land and the highest water level

Name of place where measurement is taken (T.Pm)	Start time of effects ±20cm	Start time of effects +20cm	First wave	Highest wave
○.○m	○min	○min	○min	○min

±0.2m: Start time of effects
 First wave: Arrival time of first wave
 Highest wave: Arrival time of highest wave



Kiyohata

Maximum tsunami height (T.Pm)	Start time of effects ±20cm	Start time of effects +20cm	First wave	Highest wave
13.3m	13min	29min	37min	37min

